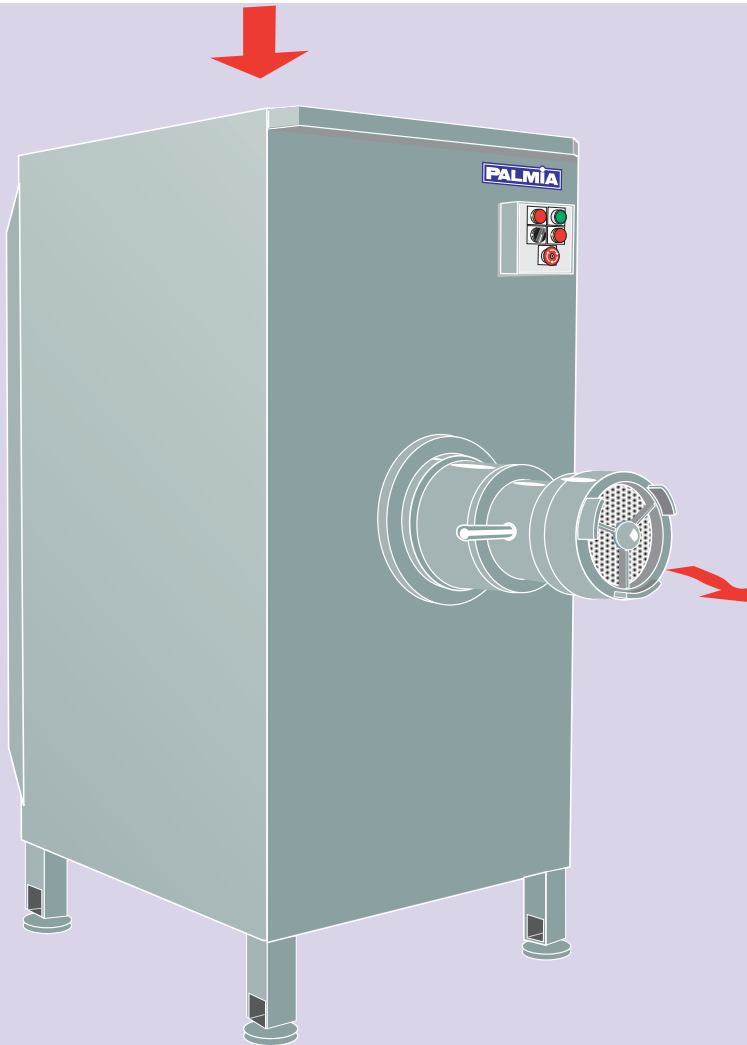


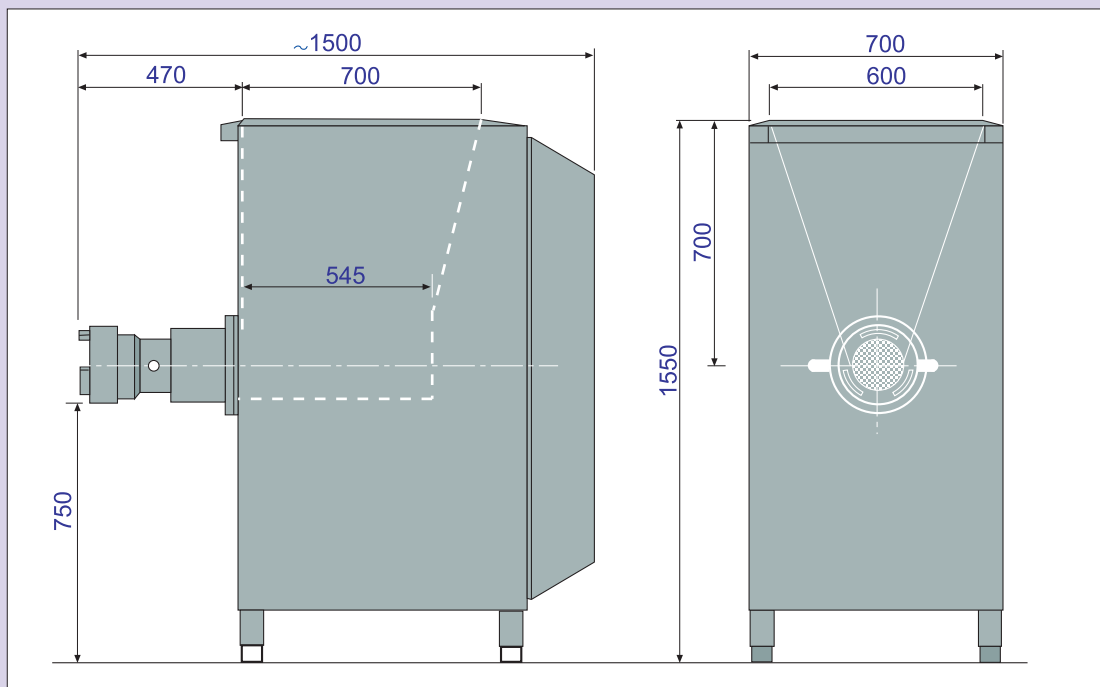
PALMIA GRINDER

SERIES 160



ACCESSORIES

For complete processing lines we manufacture also the band and screw conveyors, lifting and tipping devices, trolleys, silos and the other needed accessory equipment.



PALMIA GRINDER

SERIES 160

TECHNICAL INFORMATION

Capacity: up to 4 tons/h
depending on hole size
and the product to be ground

Dia. of plate: 160 mm
Motor: 15 kW
Transmission: Belt drive
Material: Stainless steel, apart knives,
hole plates and feedscrew.
The feed screw is also obtain-
able in stainless.

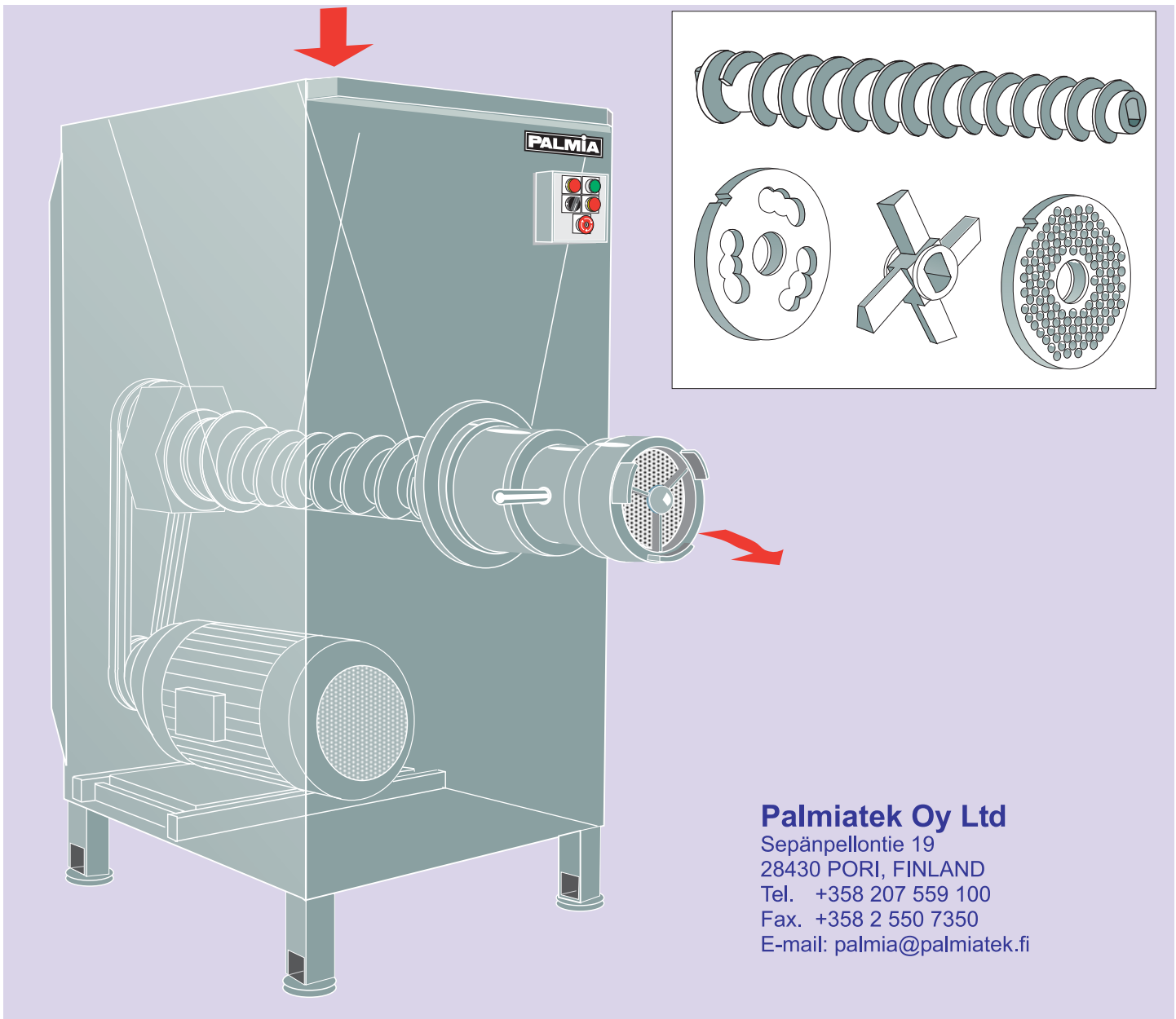
Total length: 1500 mm
Total height: 1550 mm
Total width: 700 mm
Net weight: 550-625 kg

KNIVES

One or two-knife assemblies can be used
depending on the product to be ground and
the desired fineness of grind.

HOLE PLATES

The 160 series of grinders are primarily
designed for fine grinding through 2 and 3 mm
hole plates. In addition to the standard plates
we can also offer custom designed plates and
equipment for bone and sinew separation.



Palmiatek Oy Ltd

Sepänpellontie 19
28430 PORI, FINLAND
Tel. +358 207 559 100
Fax. +358 2 550 7350
E-mail: palmia@palmiatek.fi