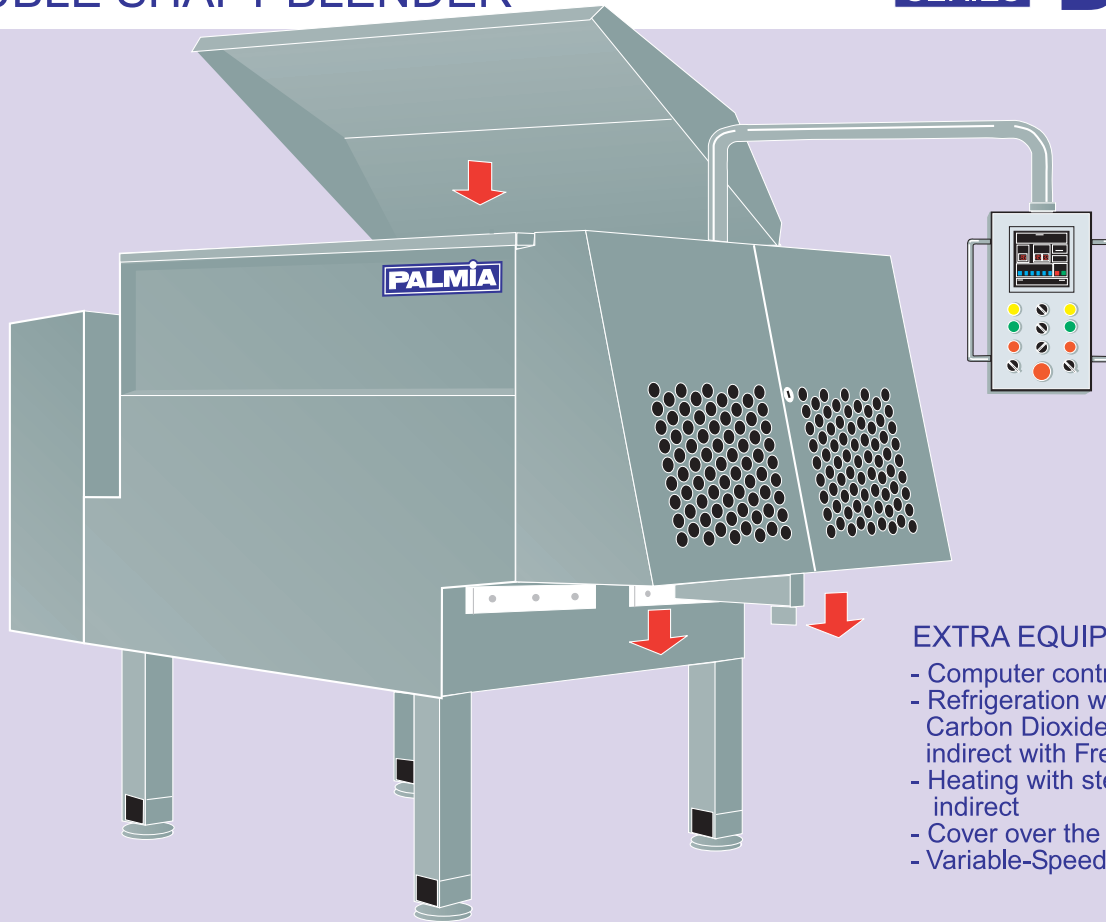


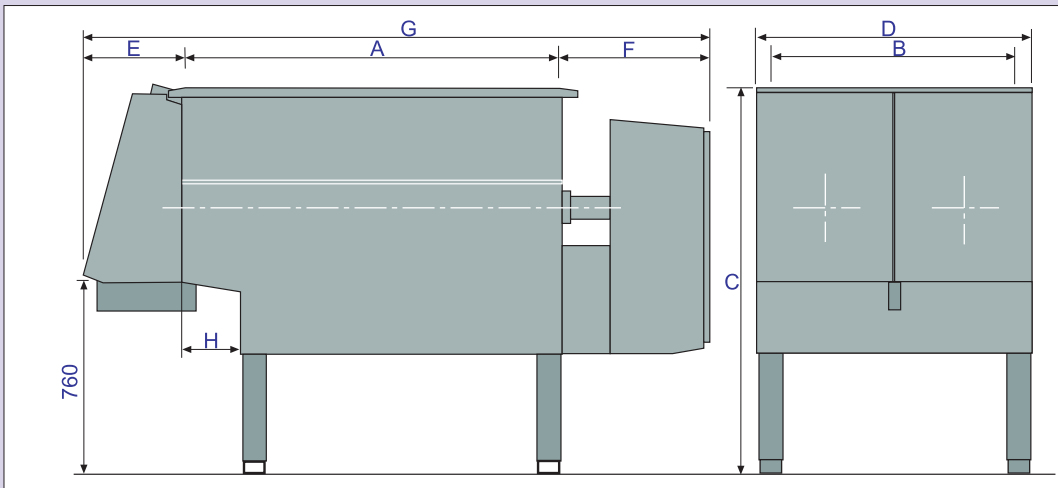
DOUBLE SHAFT BLENDER

SERIES **DB**



EXTRA EQUIPMENT

- Computer controlled program
- Refrigeration with Nitrogen or Carbon Dioxide direct and indirect with Freon or cold water
- Heating with steam direct or indirect
- Cover over the opening
- Variable-Speed control



Model/ Volume	A	B	C	D	E	F	G	H
<b>300</b>	900	806	1350	926	358	740	2000	200
<b>700</b>	1000	1000	1525	1100	405	770	2175	220
<b>1000</b>	1500	1000	1525	1100	405	770	2675	220
<b>1500</b>	1500	1250	1660	1370	450	860	2810	300
<b>2000</b>	2000	1250	1660	1370	450	860	3310	300
<b>3000</b>	1750	1750	1900	1890	500	1060	3310	300
<b>4000</b>	2250	1750	1900	1890	500	1060	3810	300
<b>5000</b>	2850	1750	1900	1890	500	1060	4410	300
<b>6000</b>	3150	1750	2000	1890	500	1060	4710	300

**Palmiatek Oy Ltd**

Sepäpellontie 19  
 28430 PORI, FINLAND  
 Tel. +358 207 559 100  
 Fax. +358 2 550 7350  
 E-mail: palmia@palmiatek.fi

# DOUBLE SHAFT BLENDER

SERIES **DB**

## TECHNICAL INFORMATION

Capacity:	300 - 6000 l
Motors:	2 pcs / 1,5 - 7,5 kW 2 - speed with DC - brake unit
Transmission:	V - belts from motors to gearbox, direct driving of the mixing arm
Material:	Stainless steel
Total length:	1600 - 4100 mm
Total height:	1400 - 1900 mm
Total width:	850 - 1890 mm
Discharge height:	750
Net weight:	500 - 2000 kg

## CONSTRUCTION

Bearing mountings and gable-end seals are specially constructed to meet demands on operational and functional reliability. The bearings are spherical roller bearings and the seals are adjustable to provide the greatest possible degree of proofing.

## CONTROL PANEL

The blender's functions are controlled by means of a centrally located panel with controls for pneumatic operation of the discharge hatches and separate functions for forward, reverse and stop operation of the two driving motors. Timer for mixing time.

## MIXING ARMS

Two different types: spiral ribbon and paddle.

